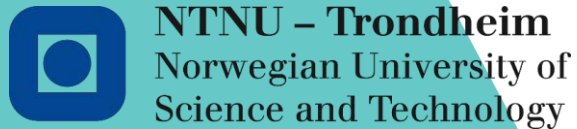




Servicescape of the Greater Serengeti-Mara Ecosystem:

Visualizing the linkages between land use, biodiversity and the delivery of wildlife-related ecosystem services



This project has received funding from the European Union's Horizon 2020 research and innovation programme under grant agreement No 641918.

Roel May, Craig Jackson,
Kjetil Bevanger & Eivin Røskaft



Living with Wildlife

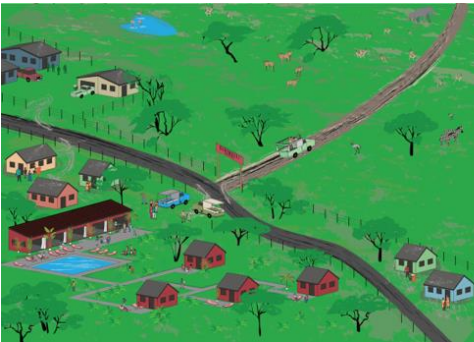
- ❖ Safari tourism
- ❖ Trophy hunting
- ❖ Bushmeat hunting
- ❖ Depredation
- ❖ Biodiversity
- ❖ Welfare



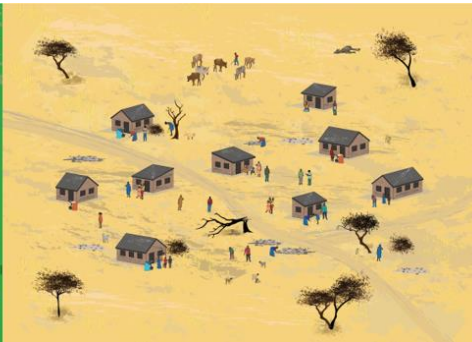
Managing Co-Existence

- Visualizing trade-offs between ecosystem services and evaluating implications of management strategies
- Contrasting effects of four development scenarios, incl. Business As Usual

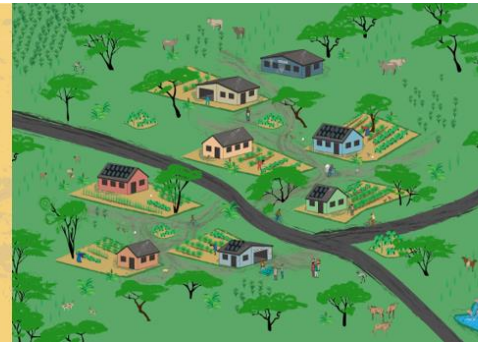
Green Haven



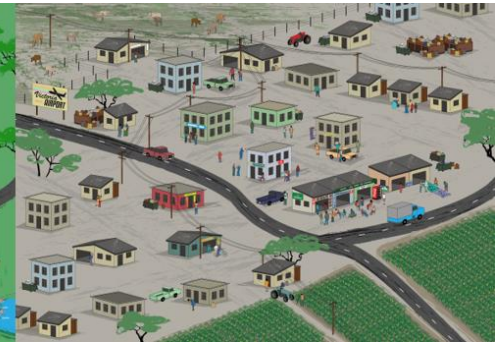
Downward Spiral



Local Communities

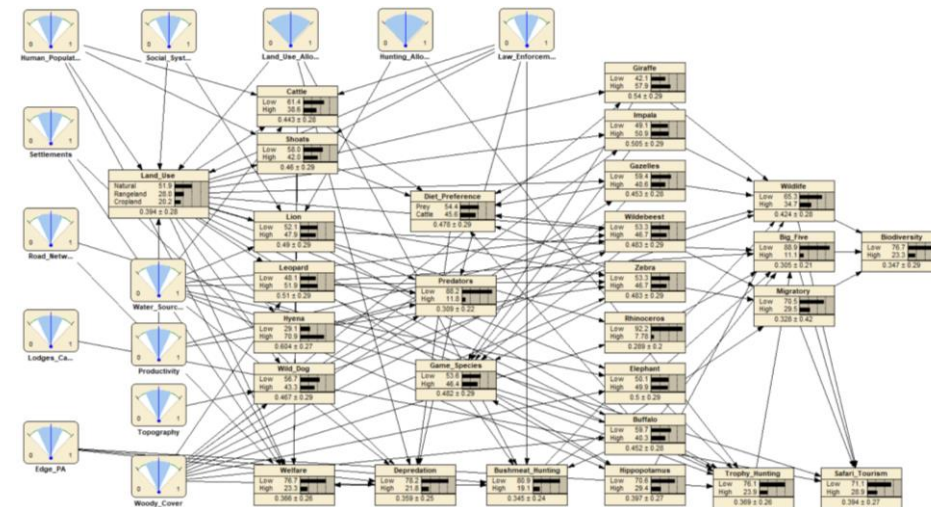


Globalization



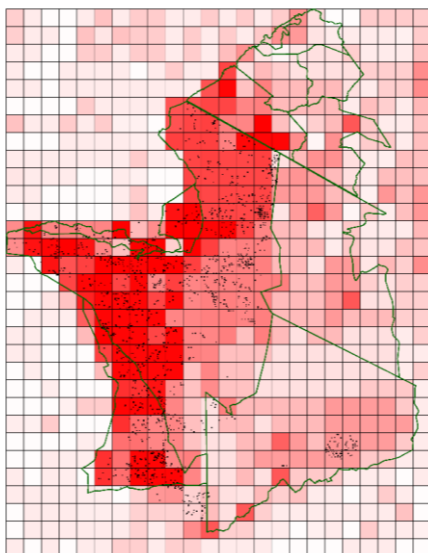
Modelling Co-Existence

- Knowledge-driven model that is able to capture complex social-ecological systems
- Bayesian Belief Network to model the likelihood of specific management on wildlife or environmental states
- Geographic Information Systems (GIS) to visualize the spatial distribution of ecosystem services in the landscape

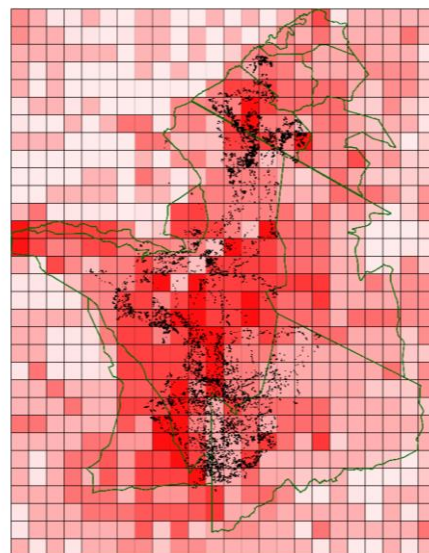


...Reality check...

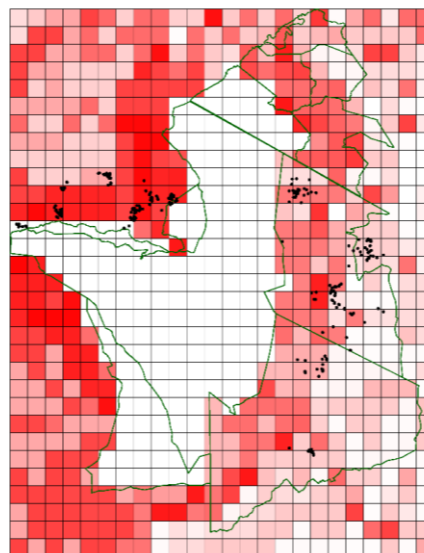
Buffalo



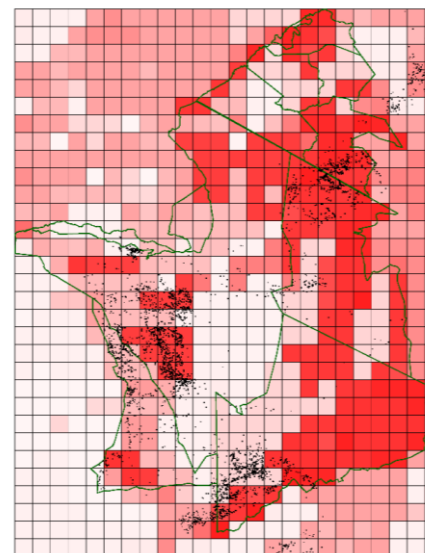
Wildebeest



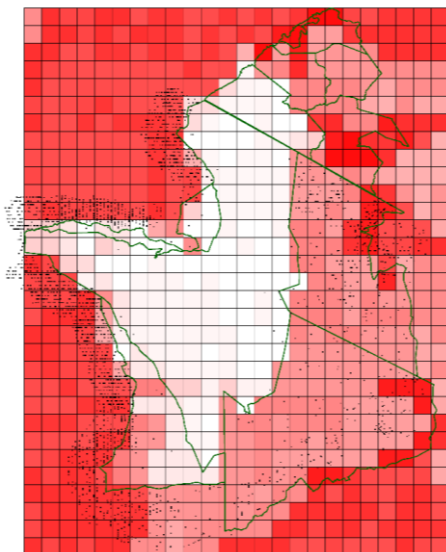
Depredation



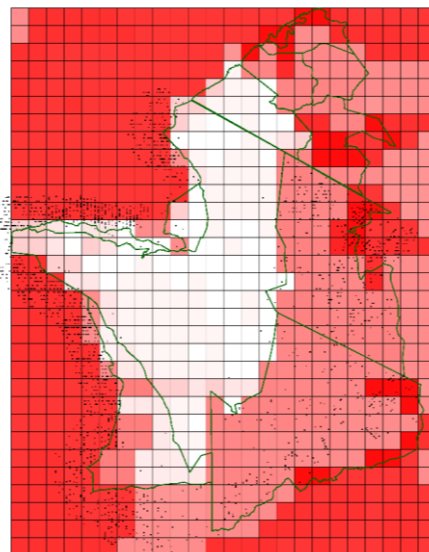
Wild dog



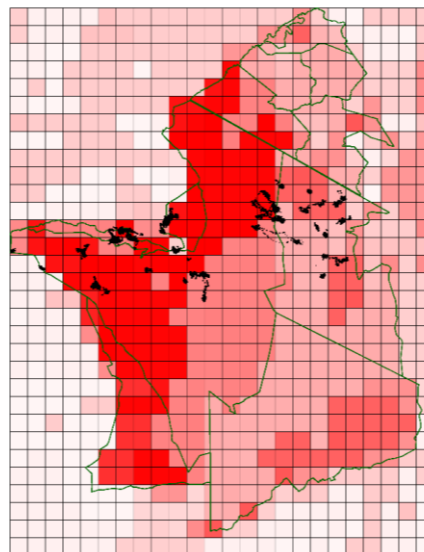
Cattle



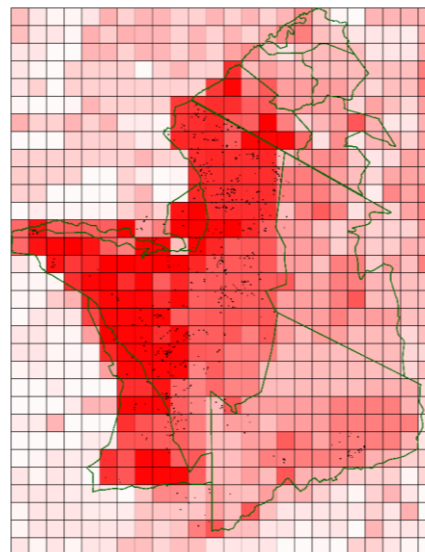
Shoats



Impala

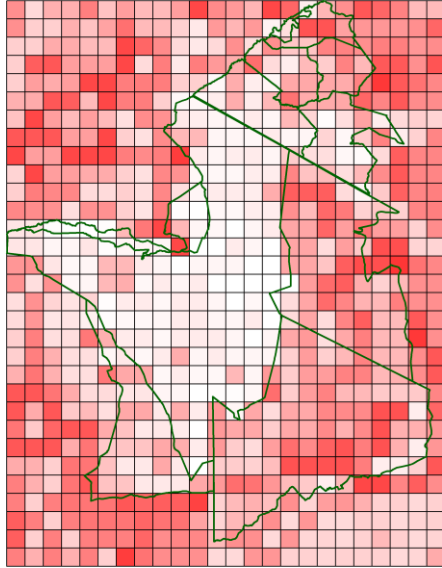


Elephant

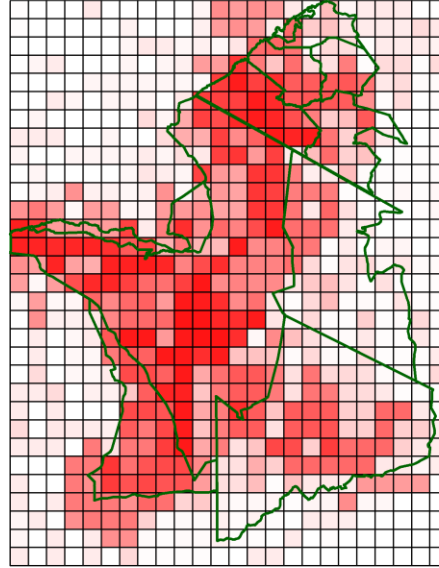


...Believe It Or Not...

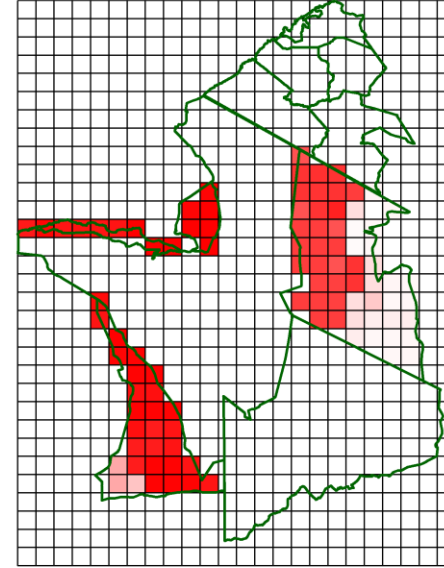
Welfare



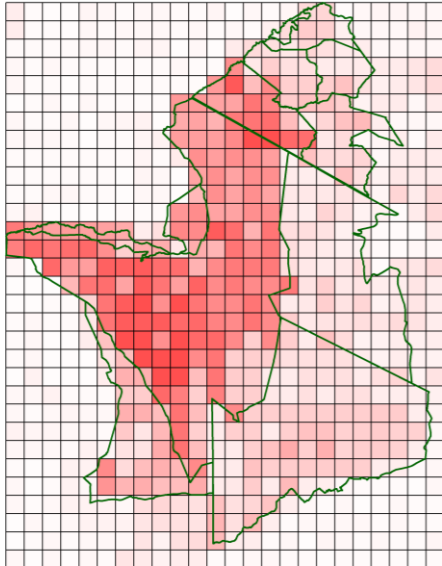
Safari Tourism



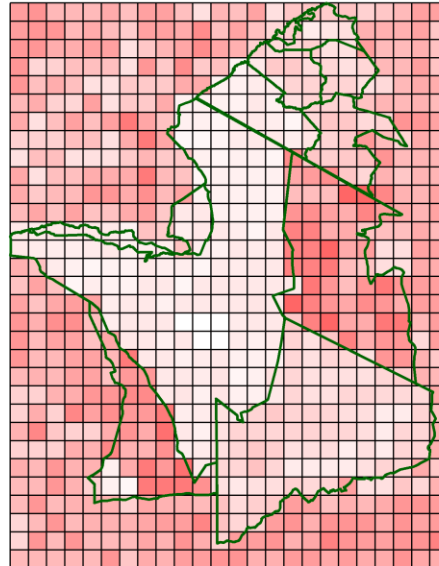
Trophy Hunting



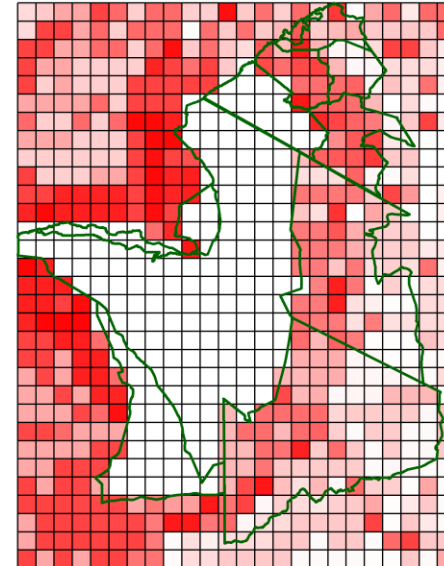
Biodiversity



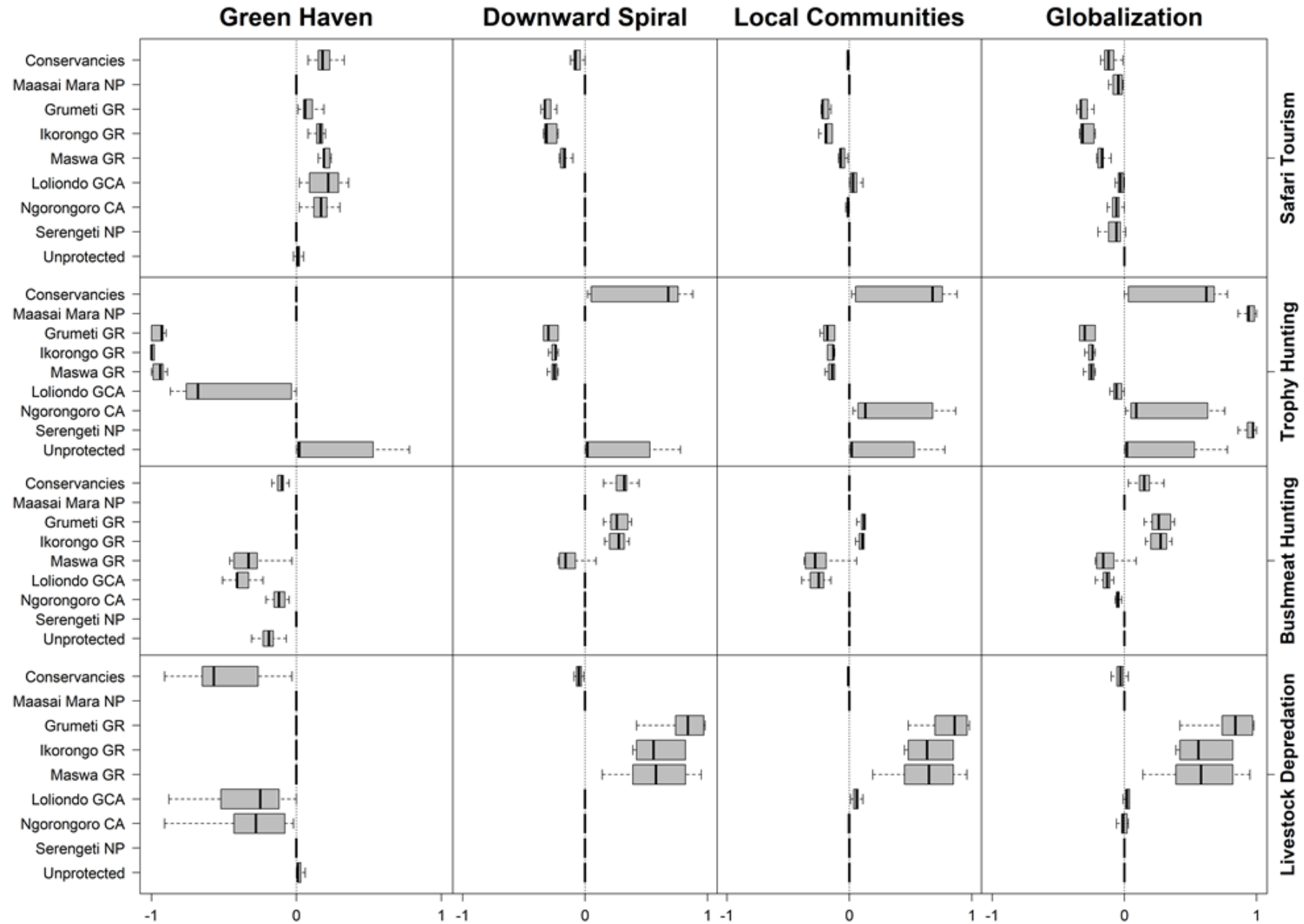
Bushmeat Hunting



Livestock Depredation



...Where to go...



The Serengeti ServiceScape

Settings

Step 1. Choose your Development Scenario of interest:

Business as Usual

Step 2. Do you wish to compare Development Scenarios?

☐ No (go to Step 4) ☒ Yes (go to Step 3)

Step 3. Choose your Development Scenario for comparison:

Globalization

Step 4. Choose your Ecosystem Service of interest:

Bushmeat Hunting

Step 5. Do you wish to compare Ecosystem Services?

☒ No ☐ Yes (go to Step 6)

Step 6. Choose your Ecosystem Service for comparison:

Bushmeat Hunting



This tool is a product of the EU-project AfricanBioServices.

Programme funded by EU - grant agreement No 641918

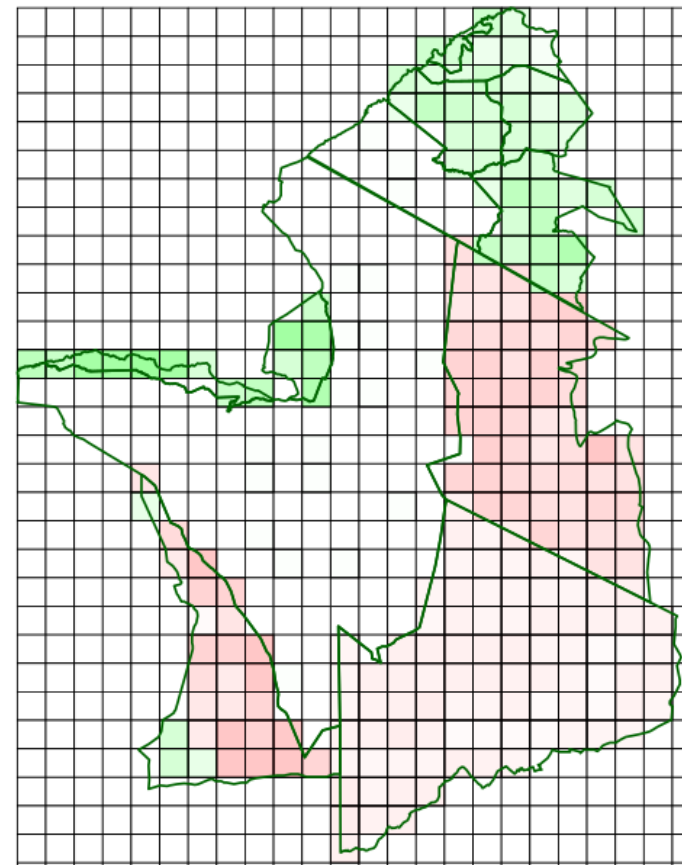
Information

Maps

Plots

Capital

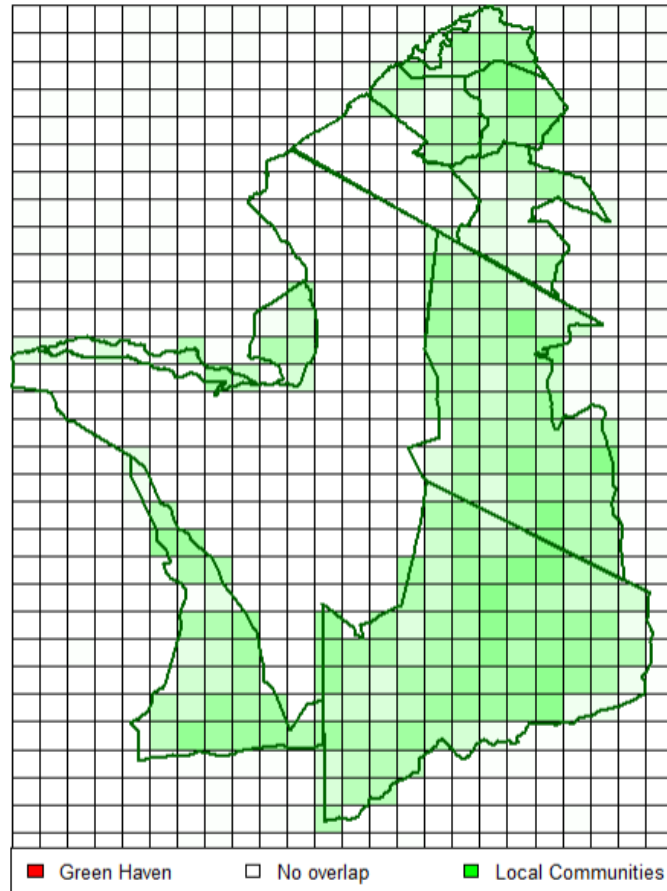
Relative change between Business as Usual and Globalization for Bushmeat Hunting



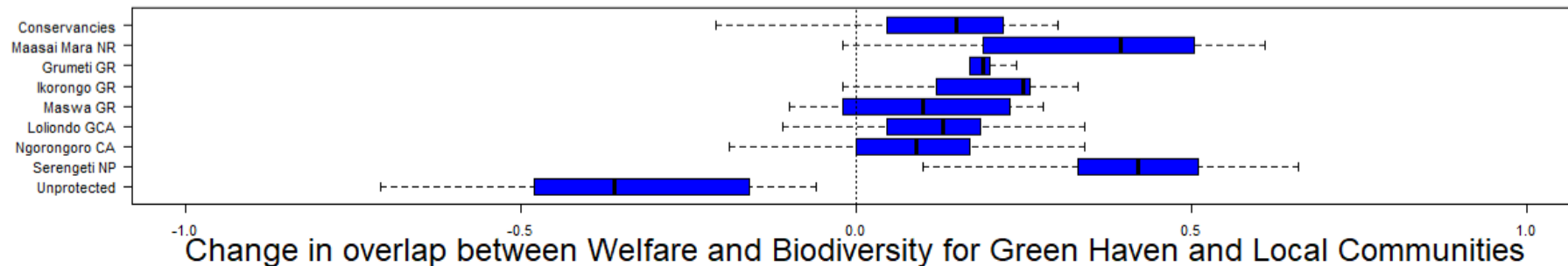
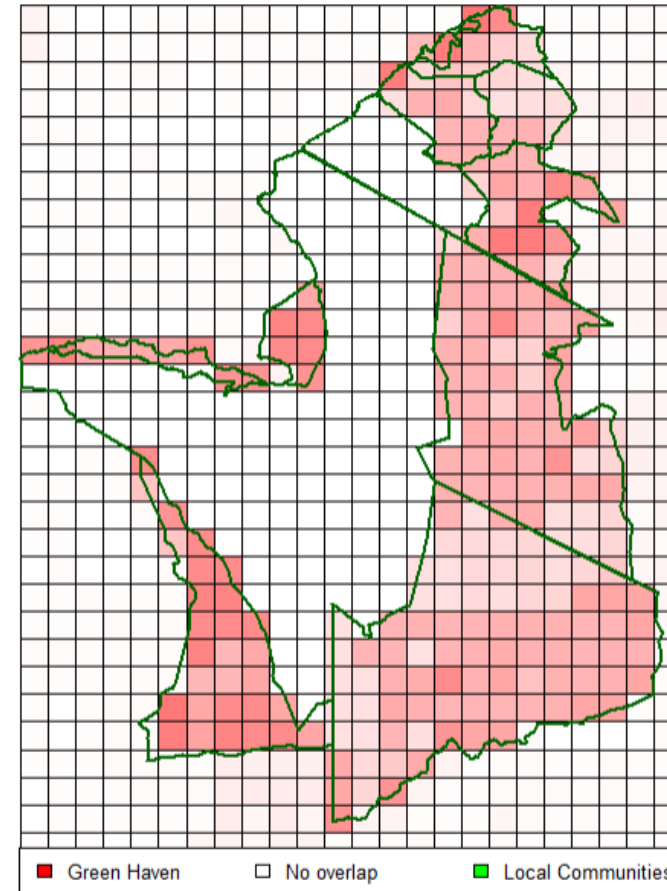
■ Business as Usual □ No change ■ Globalization

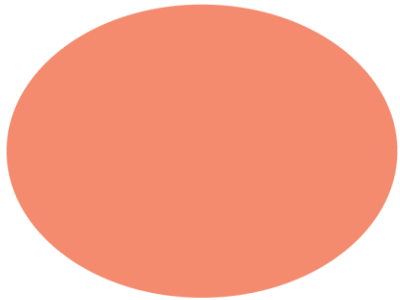
<https://africanbioservices.shinyapps.io/servicescape/>

Change in Welfare between Green Haven and Local Communities



Change in Biodiversity between Green Haven and Local Communities





*Live on the wild side
Faring well is capital
At your (dis)service!*