

Arctic Practices



Photo Credit: Maia Hoeberects

CAPARDUS ASSW 2022 Workshop

Presented by Jay Pearlman and
Siri Jodha Khalsa

Identify Priority Standards and Best Practices (S&BP) From Use Cases

Greenland

Svalbard

Russia

Alaska

Co-Develop A Comprehensive Framework of S&BP

Greenland

Svalbard

Russia

Alaska

Science
Research

Arctic Practices Repository



Co-design with stakeholders
Implementation Roadmap for APS
Co-design Submission Templates

Technology Development

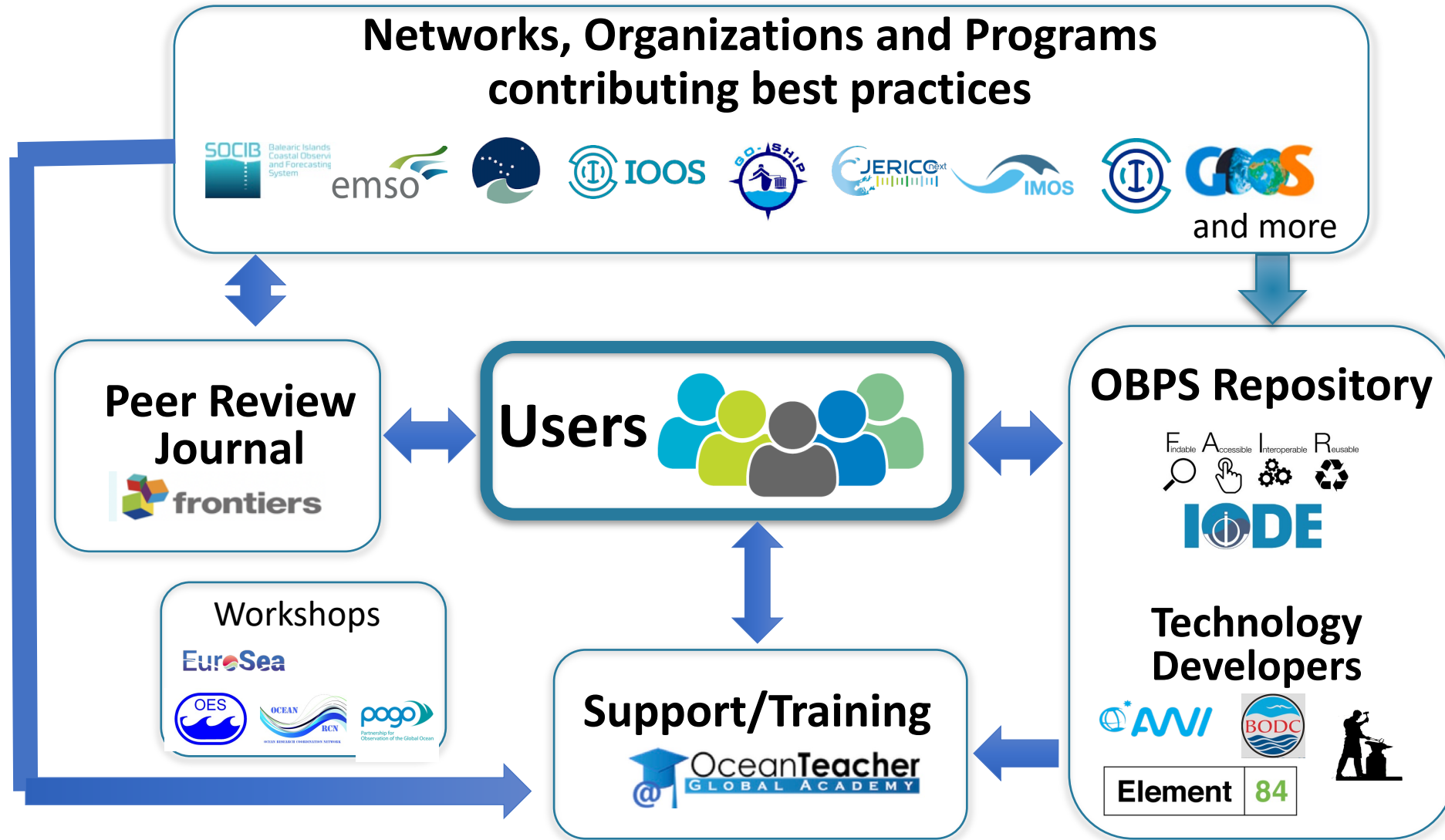
Element 84



Linked Open Data
Ontologies

Requirements Synthesis
and Recommendations

Ocean Best Practices System as an Arctic Practices System Pilot



Best Practices foster Quality, Interoperability



Best Practices are a Foundation for ocean research and applications



Quality and consistency of observations and information

Efficiency (don't re-invent the wheel)

Transparency - Data traceability, reproducibility and uncertainty quantification

Resource for training and capacity development



Upper Photo courtesy of Sophie Seeyave, POGO



The path



- Co-creation
- Co-design/Co-production
- Capacity sharing
- Cross-cultural collaboration
- Shared Arctic Variables
- ...

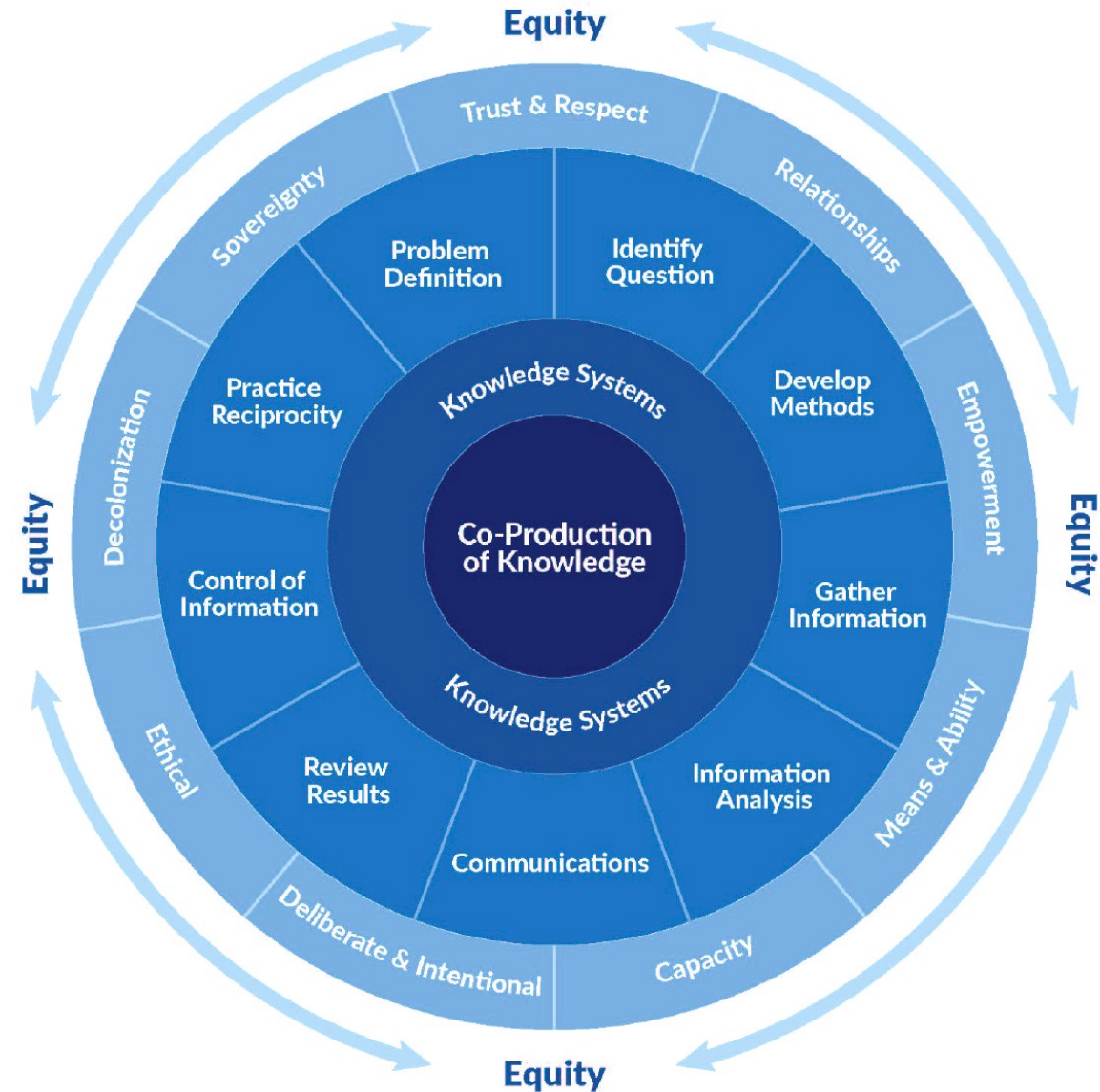


Credit: Maia Hoeberects

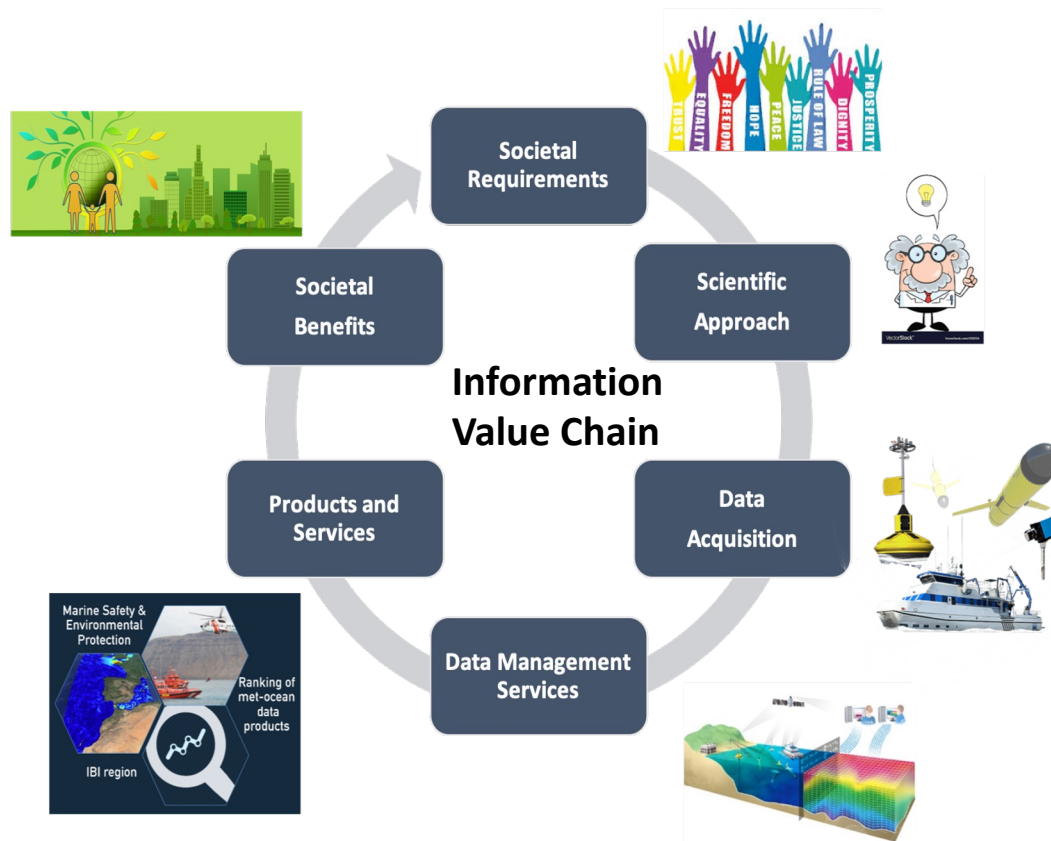
Equity and Understanding

Built through:

- Communication
- Respect/Trust
- Systematic engagement
- Sharing (methods)



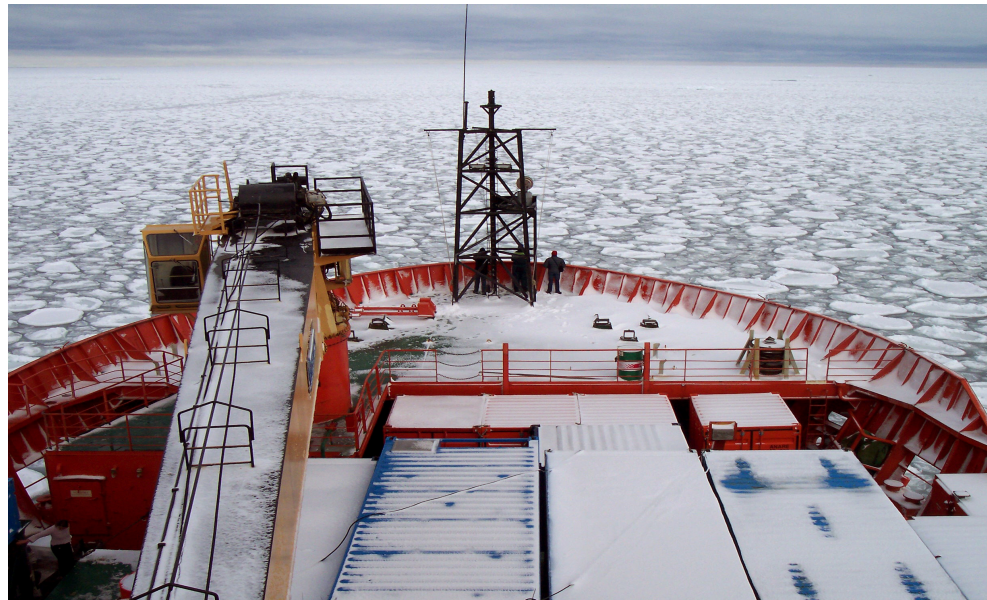
Best Practices for Fisheries Advice (ICES)



Based on Fish stocks assessment, Aarhus Convention

The User Needs

- Preserving
- Discovering
- Accessing
- Understanding
- Usable

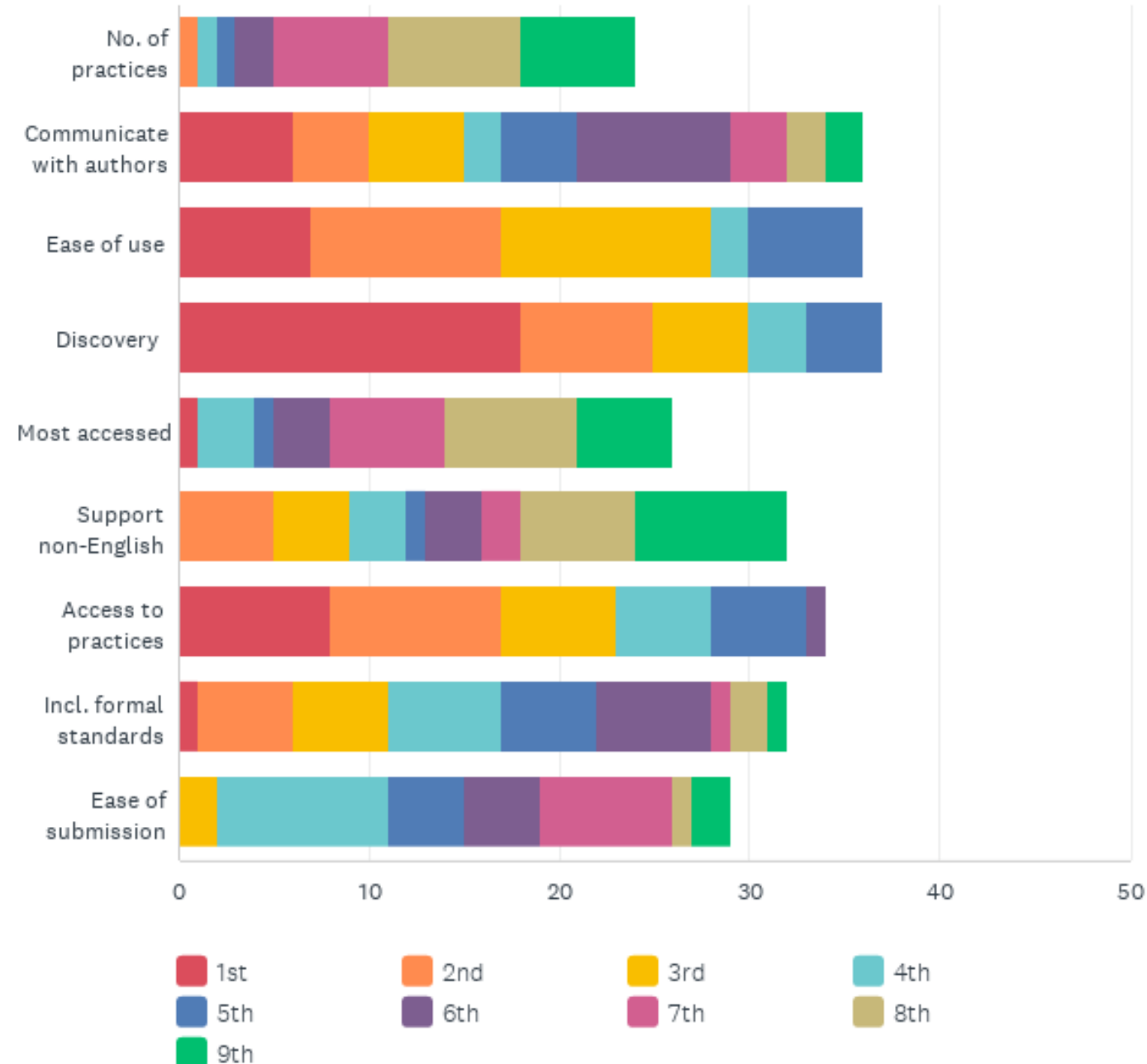


Survey

- Initial Survey structured for research and applications; Key focus: Responder's background, APS requirements, Arctic Practices
- Outreach to Indigenous Peoples to come
- Currently 50 responses with 75% from academic and research institutions

Q7 What are your priorities for APS characteristics?

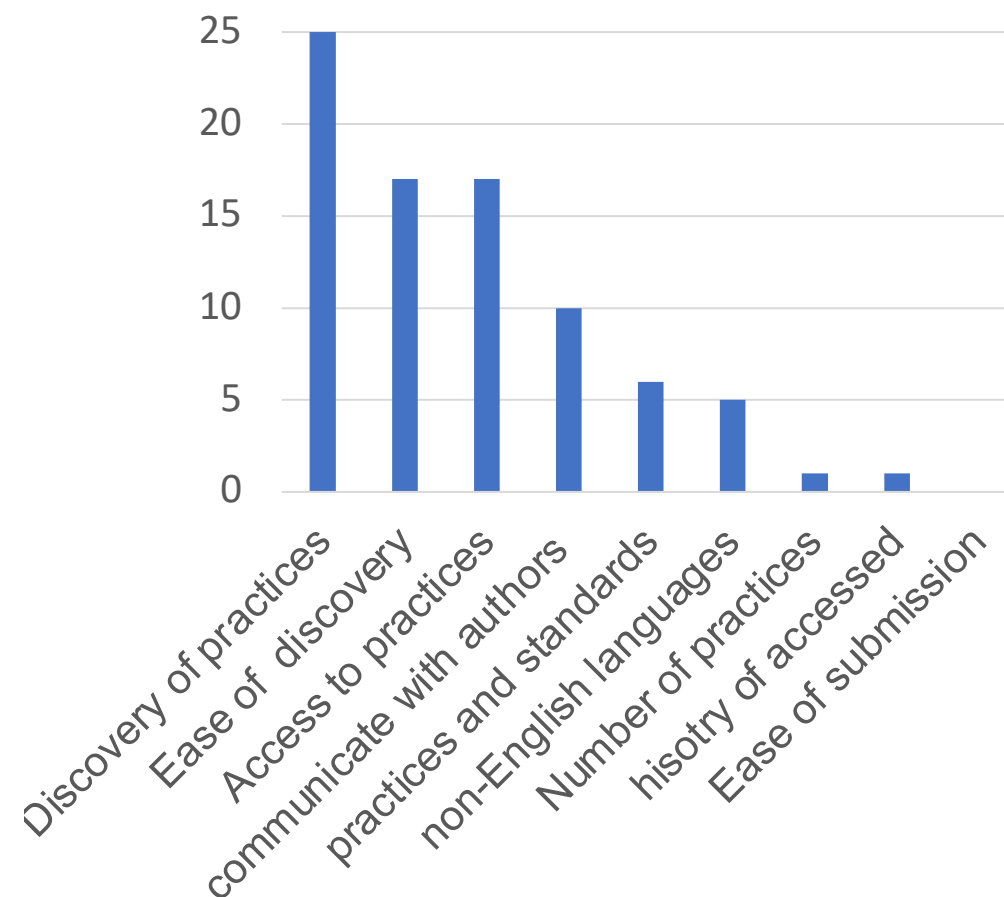
- Discovery is highest overall and most select as first priority
- Communication with authors, access and ease of use also high priority
- Support for languages other than English also significant



Priorities of Q7: What are your priorities for APS characteristics?



Topic	#1	#2	#3	#4
Discovery of practices	18	7	5	3
Ease of use for discovery	7	10	11	2
Access to practices in APS	8	9	6	5
Communicate with authors	6	4	5	2
Practices and standards	1	5	5	6
Non-English languages	0	5	4	3
Number of practices	0	0	2	9
History of accessed	1	0	0	3
Ease of submission	0	1	0	1



Plot of first two priorities

Key APS characteristics – text inputs

- Inclusion of accessible language (“User-friendly as of easy language (no jargon etc”).
 - Use at a local level
- Inclusion of indigenous contributions (“Inclusion of Indigenous methodologies and Indigenous Knowledge based practices.”)
 - Intellectual properties and engagement
- Accessibility of content (“The web interface should be reactive so it's accessible on a mobile phone”)
 - Machine, web and human
- User selection of practices (“I would want to see practices linked to training materials”)
 - What is being implemented, training

Looking 3-5 years ahead - what are the most important advances in maintaining and using practices?

“Better documentation and democratization”

“Evaluation - are practices being used in the ways that Arctic Indigenous peoples intended”

“Secured long-term funding”

“That practices become generally accepted by relevant stakeholders”

“Just having access to practices used across the Arctic with understanding that they may need to be flexibly adjusted to meet specific needs”

Recommendations

- For SAON and ROADS
 - APS as a component of the Arctic observing system (SAON ROADS)
 - a resource for communication and understanding
 - a foundation for capacity sharing
- For community participation
 - Participate in co-design of requirements
 - Use the Ocean Best Practices System as a test bed
 - Engage with us in the endorsed Ocean Decade "OceanPractices"

Arctic Practices – Challenges for discussion

What benefits could diverse communities derive from an APS?

How do we communicate these benefits?

How do we effectively and equitably engage Indigenous communities?

Can an APS help in bridging indigenous and western worldviews?

Identifying sustained resources for APS development and operation?

Advantages of being part of the SAON ROADS (roadmap) process?

Thank you

For further information:

- CAPARDUS - <https://capardus.nersc.no>
- Ocean Best Practices: oceanbestpractices.org
- White paper for AOS
https://arcticobservingsummit.org/wp-content/uploads/2022/03/2022_017_Pearlman.pdf

Please contact us with your thoughts.