

NAMMCO



# User Knowledge in NAMMCO's Advisory Work

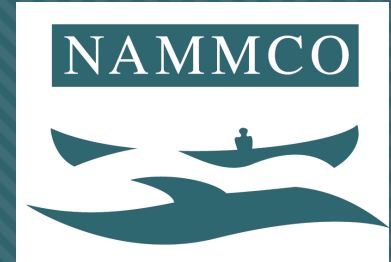
*Fern Wickson (on behalf of the whole NAMMCO Secretariat)*

*[fern@nammco.org](mailto:fern@nammco.org)*

*[www.nammco.org](http://www.nammco.org)*

# NAMMCO

## North Atlantic Marine Mammal Commission



### Intergovernmental Organisation

Providing Advice for Marine Mammal  
Management in the North Atlantic

### Four Member Countries:



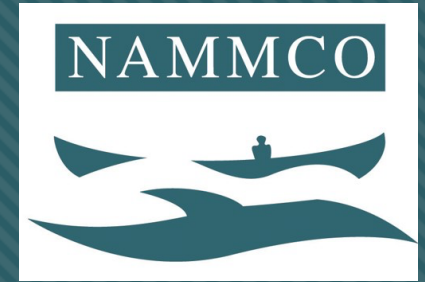
Committed to:

*Sustainable & Responsible Use*  
*Best Available Science & User Knowledge*  
*Ecosystem Approach to Conservation*



Photo Credit: Audun Rikardsen

# Our Context



**Faroe Islands:** Communitarian hunt, primarily 1 species (some others occasionally)



**Greenland:** Many different small-scale hunts of both seals and whales



**Iceland:** Commercial whale hunt 2 species (none in recent years), non-commercial seal hunt

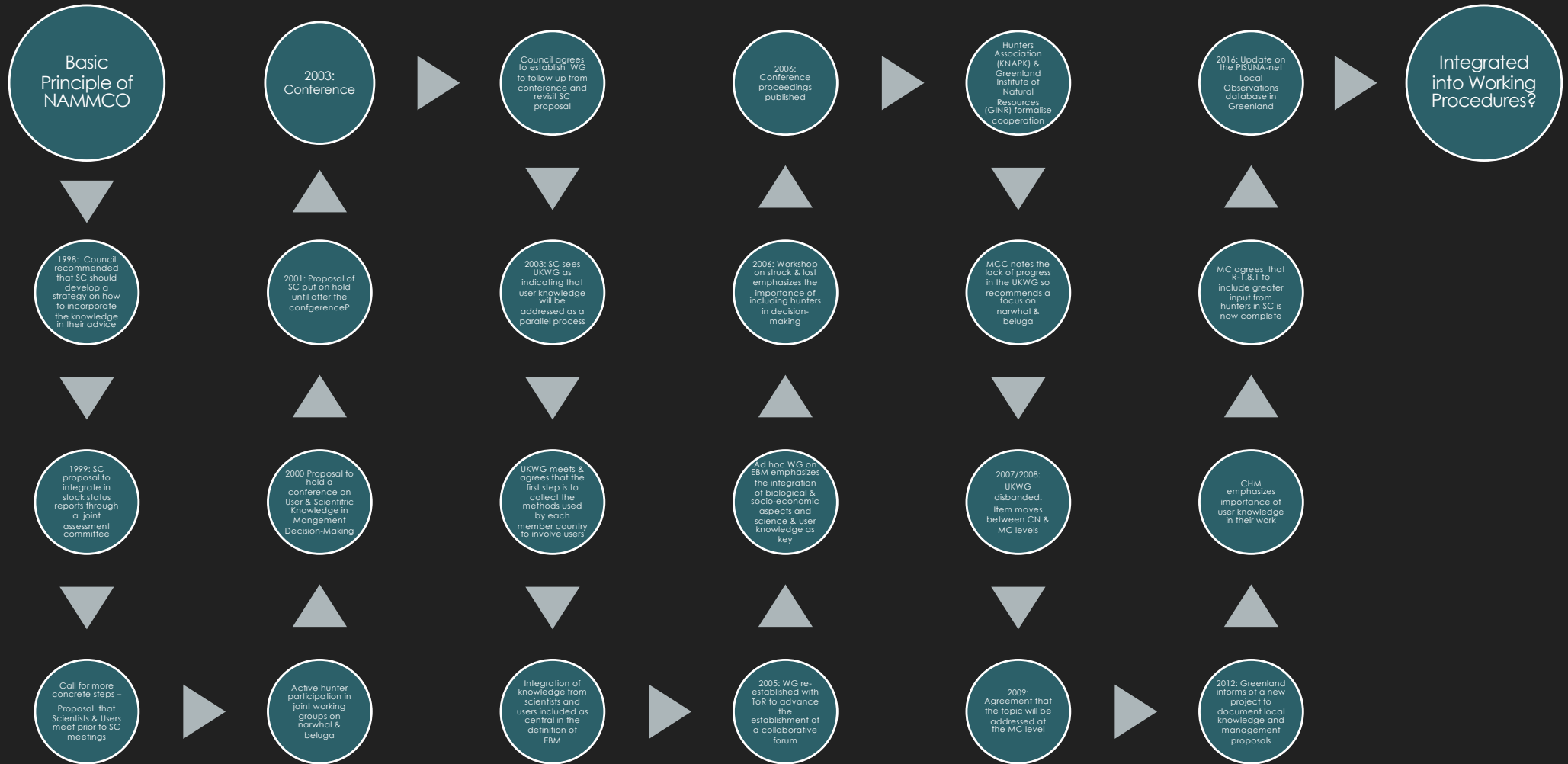


**Norway:** Commercial hunt of 1 whale species and 4/5 seal species

**NAMMCO makes no distinction between indigenous & other hunters, or between the legitimacy of subsistence vs commercial hunting.**

**In NAMMCO all are referred to as "Users" of marine mammals as a resource.**

# User Knowledge in NAMMCO: The Past...



# User Knowledge in NAMMCO: The Past...

Basic Principle of NAMMCO

2003: Conference

Council agrees to establish WG to follow up from conference and revisit SC proposal

2004: Conference proceedings published

Hunters Association (KNAPK) & Greenland Institute of Natural Resources (GINR) formalise cooperation

**Held Conference on User Knowledge & Science in Management Advice**



1998: Council recommended that SC should develop a strategy on how to incorporate the knowledge in their advice

2001: Proposal of SC put on hold until after the conference?

2003: SC sees UKWG as indicating that user knowledge will be addressed as a parallel process

2006: Workshop on struck & lost emphasizes the importance of including hunters in decision-making

MCC notes the lack of progress in the UKWG so recommends a focus on narwhal & beluga

~~Established User Knowledge Working Group~~

1999: SC proposal to integrate in stock status reports through a joint assessment committee

2000: Proposal to hold a conference on User & Scientific Knowledge in Management Decision-Making

UKWG meets & agrees that the first step is to collect the methods used by each member country to involve users

Ad hoc WG on EBM emphasizes the integration of biological & socio-economic aspects and science & user knowledge as key

2007/2008: UKWG disbanded. Item moves between CN & MC levels

CHM emphasizes importance of user knowledge in their work

~~Proposed Joint Assessment Committee~~

**Integration of biological & socio-economic aspects recognised as central to an Ecosystem-based approach to Management**

Call for more concrete steps - Proposal that Scientists & Users meet prior to SC meetings

Active hunter participation in joint working groups on narwhal & beluga

Integration of knowledge from scientists and users included as central in the definition of EBM

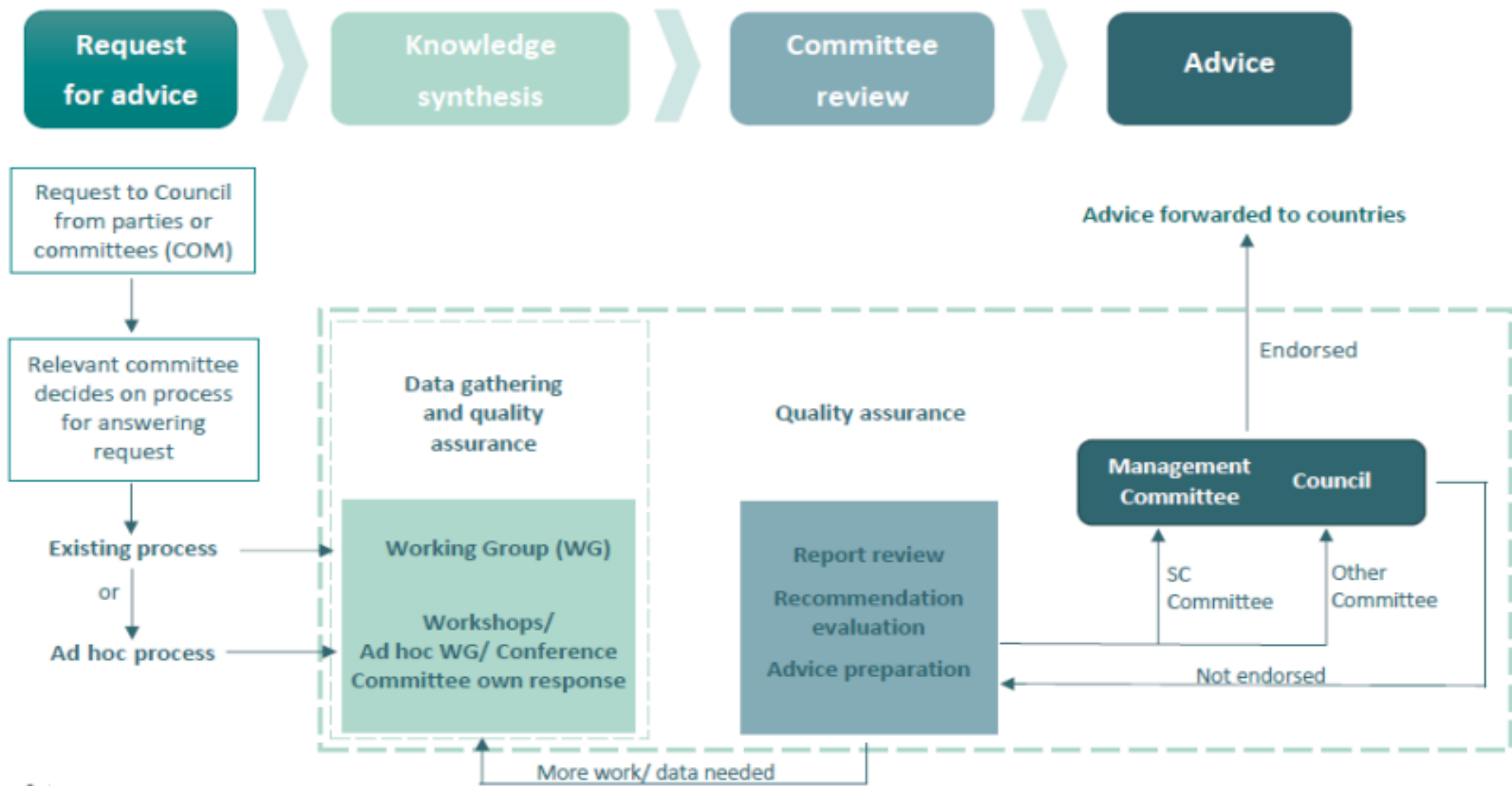
2005: WG re-established with ToR to advance the establishment of a collaborative forum

2009: Agreement that the topic will be addressed at the MC level

informs of a new project to document local knowledge and management proposals



**General Process for Developing Management Advice within NAMMCO**



## General Process for Developing Management Advice within NAMMCO

# How does NAMMCO work to bring the knowledge of hunters & local people into decision-making & advisory work?



## **Council**

- National Delegations can have members from Hunting Organisations
- Organisations outside Member Countries can participate as Observers

## **Management Committees**

- Input through National Delegations
- Presentations at Meetings
- User Knowledge Permanent Agenda Item for Meetings of the Joint Management Committee

## **Committee on Hunting Methods**

- Committee Members (nominated by Member Countries)
- Open Workshops & Invited Expert Group Meetings

## **Scientific Committee / Working Groups**

- Assistance with Research Projects
- Input to Survey Planning

## **National Level**

e.g., Public Hearings on Management Decisions, which may or may not follow NAMMCO Advice



**What are the plans of NAMMCO to further strengthen the involvement of hunters and local people in the future?**

# What are **possible ways** for NAMMCO to further strengthen the involvement of hunters and local people in the future?

Notify organisations of workplans

Develop MoUs with relevant organisations to agree on information sharing & collaboration

Enhance research collaboration

Develop joint research programs & projects

Have member countries nominate TLK members to CHM & include TLK representatives in all national delegations

Host Dialogue Forums to build understanding & trust

Hold Vision Workshops to establish shared goals & plans

Establish a committee to assess socio-economic & cultural impacts to inform the advisory process

Encourage expansion & use of observational databases (e.g. PISUNA-net)

Receive structured TLK input to all Working Groups

Observers in Working Groups / Scientific Committee meetings

Re-activate the User Knowledge Working Group

Call for inputs to Working Groups

Active participants in Working Groups

Pursue integrative assessment & advice

# What are **possible ways** for NAMMCO to further strengthen the involvement of hunters and local people in the future?

## NAMMCO? National Level?

Notify organisations of workplans

Encourage expansion & use of observational databases (e.g. PISUNA-net)

Call for inputs to Working Groups

Develop MoUs with relevant organisations to agree on information

to all Working Groups

Enhance research

Active participants in Working Groups

Develop joint research

Have member countries & include TLK representatives

Involve the User Working Group

Host Dialogue Forums to build understanding & trust

Hold Vision Workshops to establish shared goals & plans

Establish a committee to assess socio-economic & cultural impacts to inform the advisory process

Pursue integrative assessment & advice



**Thanks!**

**Suggestions?**

[fern@nammco.org](mailto:fern@nammco.org)

[nammco-sec@nammco.org](mailto:nammco-sec@nammco.org)